

OPTIPRO

Trusted Technology.



eSX 300



eSX 400



SXL 500

eSX Series & SXL 500 CNC Optical Grinding

■ Prototype to Production

Powerfully Simple Set-Ups ■

■ Exceptional Ergonomics

The Latest in CNC Grinding Technology ■

SAVE TIME

- Easy-to-use graphical user interface minimizes setup time
- Integrated tool and part probing streamlines the fabrication cycles
- Quick change high speed tool spindles enhance the machine's total throughput

MAKE MONEY

- High production machine that also has 5 axes of simultaneous movement for prototype optics manufacturing
- Large work envelope and generous axes travels for a wide range of work piece sizes
- Grind a wide variety of optical materials

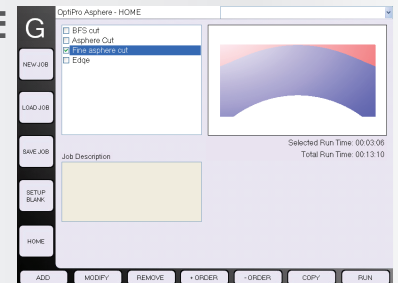
QUALITY & RELIABILITY

- Highest quality machine components
- Robust and precise spindles
- Rigid base designed for excellent stability ensures highest quality and control



EASY-TO-USE SOFTWARE

- Clean & simple interface prompts operator to input necessary data
- Ability to generate convex & concave spheres & aspheres as well as perform edging & beveling



Grinding

Polishing

UltraForm
UltraSmooth
Finishing

Measuring

Advanced
Process
Development

Training

Not Just The Same Old Grind



Specifications*	eSX 300	eSX 400	SXL 500
Workpiece Optimal Diameter Range Maximum Plano Diameter Capability** Maximum Weight	5 - 300 mm (.2 - 11.8") 350 mm (13.8") 129 kg (285 lbs.)	5 - 400 mm (.2 - 15.7") 450 mm (17.7") 154 kg (340 lbs.)	10 - 500 mm (.4 - 19.7") 550 mm (21.7") 154 kg (340 lbs.)
Work Spindle Spindle Speed Hydro-Expansion Chuck C-Axis Position and Hold	0 - 250 rpm Standard Standard	0 - 200 rpm Standard Standard	0 - 200 rpm Standard Standard
Tool Spindle Maximum Tool Diameter Maximum Tool Weight Tool Spindle Speed Spindle Power (Peak) Tool Holder Style Twin Spindle Coolant Through Spindle	250 mm (9.8") 6 kg (13.2 lbs.) 1,000 - 18,000 rpm 18kW (24.1hp) HSK63F Optional Optional	250 mm (9.8") 6 kg (13.2 lbs.) 1,000 - 18,000 rpm 18kW (24.1hp) HSK63F — Optional	300 mm (11.8") 6 kg (13.2 lbs.) 1,000 - 12,000 rpm 18kW (24.1hp) HSK63F — Optional
Travels X - Axis Travel Y - Axis Travel Z - Axis Travel B - Axis Travel C - Axis Travel	500 mm (19.6") 400 mm (15.7") 500 mm (19.6") -90° to 90° 0° to 360°	500 mm (19.7") 400 mm (15.7") 500 mm (19.7") -90° to 90° 0° to 360°	1,200 mm (47.2") 700 mm (27.6") 500 mm (19.7") -90° to 90° 0° to 360°
Communication Interface Ethernet USB	Standard Standard	Standard Standard	Standard Standard
Automatic Tool Changer	Optional	Optional	Optional
Machine Dimensions Width Depth Height Weight	2,110 mm (83") 2,515 mm (99") 2,700 mm (106") 3,400 kg (7,500 lbs.)	2,110 mm (83") 2,515 mm (99") 2,700 mm (106") 3,400 kg (7,500 lbs.)	2,570 mm (101") 3,700 mm (146") 3,020 mm (119") 5,750 kg (12,650 lbs.)
Facility Requirements Electrical Air Supply	480V +/- 5%, 59A 100PSI, 5 CFM clean dry air	480V +/- 5%, 59A 100PSI, 5 CFM clean dry air	480V +/- 5%, 67A 100PSI, 5 CFM clean dry air
Workpiece Probing Tool Probing Integrated Spherometer Asphere Fabrication Freeform Fabrication	Standard Standard Optional Optional Optional	Standard Standard Optional Optional Optional	Standard Standard Optional Optional Optional

* Specifications subject to change. Contact OptiPro for the latest specifications.

** Machine is capable of manufacturing maximum plano size in small volume. For medium and large production quantities of max plano size, consider OptiPro's larger platform.



Trusted Technology.



OptiPro Systems
 6368 Dean Parkway
 Ontario NY, 14519
 Phone: 585.265.0160
 www.optipro.com

Scan to watch
 versatile grinding >
 of complex optics

