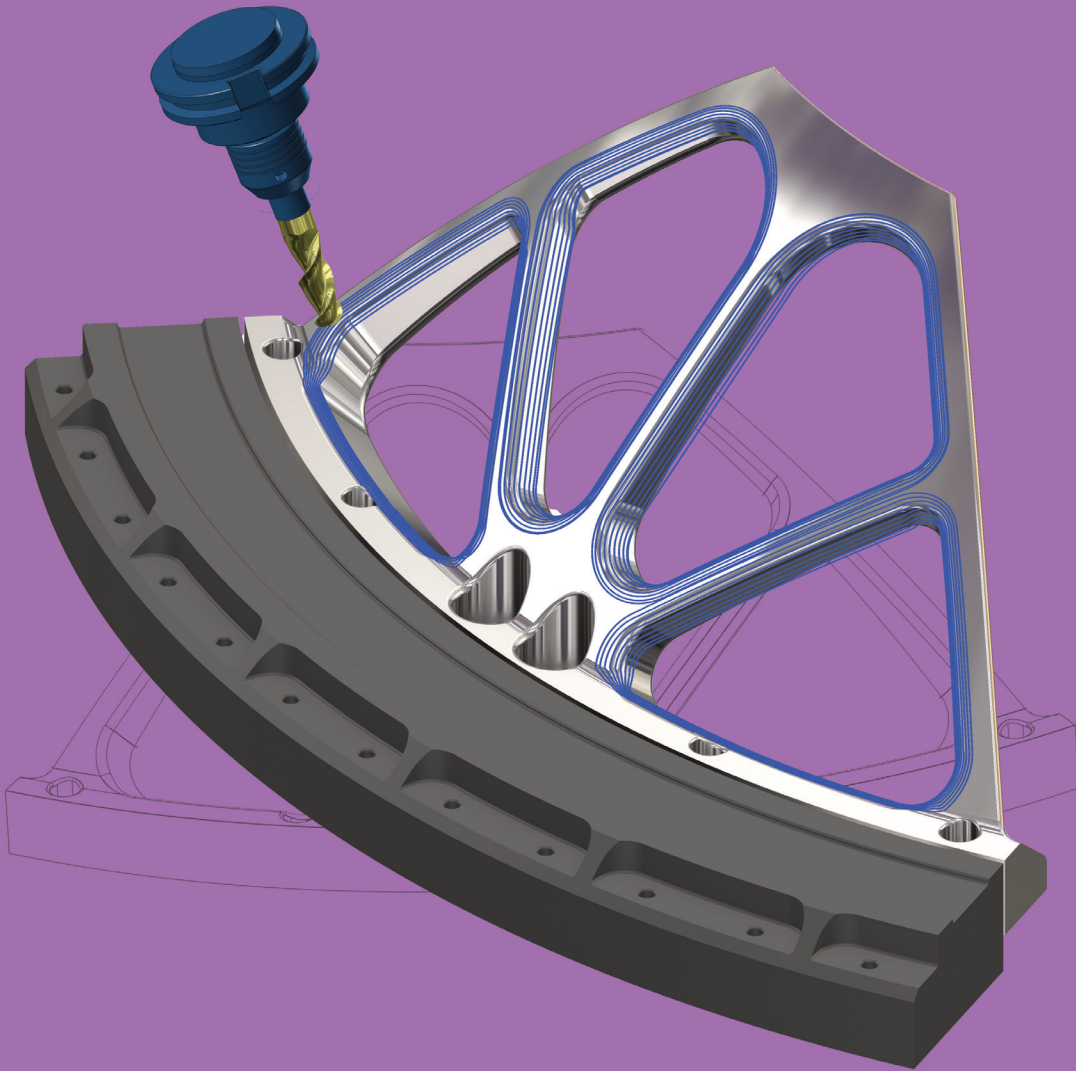




# MASTERCAM for SOLIDWORKS®



Mastercam for SOLIDWORKS® combines the world's leading modeling software with the world's most widely used CAM software.



Mastercam Mill, Mill 3D, Lathe, Router, and Router 3D **include** the option to run a corresponding Mastercam for SOLIDWORKS® environment. **Standalone** licenses of Mastercam for SOLIDWORKS® Mill, Mill 3D, and Lathe products are also available for purchase.

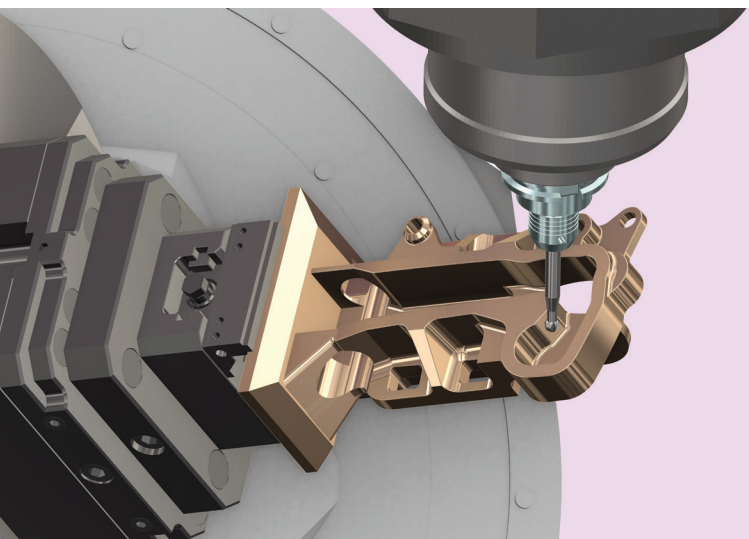
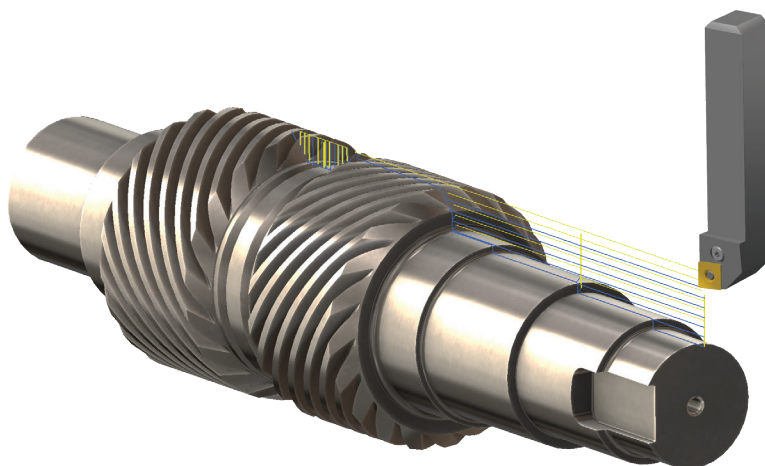
# SOLIDWORKS USERS FEEL AT EASE WITH MASTERCAM

**Design parts and drive your router, mill, or lathe, with ease and precision for 2D, 3D, and multiaxis machining.**



With Mastercam toolpaths integrated directly within the SOLIDWORKS environment, the toolpaths are applied directly to the part or assembly. Intelligent use of design tables and multiple configurations automates family of part programming.

*As a Certified Gold Product, Mastercam for SOLIDWORKS delivers the absolute best in 2- through 5-axis milling, routing, and turning CAD/CAM integration.*



*Mastercam's active Stock Model, Toolpath Verification, and Simulation mean increased confidence on every project. Tool library support, including CoroPlus® and MachiningCloud, helps you make tooling decisions fast.*



Protect your CAD/CAM investment with Mastercam Maintenance. Keep your machining strategies and technology up to date with ongoing software updates and exclusive Maintenance benefits.

## Flexible and expandable.

No matter how complex a part, with toolpath associativity, any modification to the job means the toolpaths are updated immediately. You can also build a library of your favorite machining strategies, apply them to a part, and Mastercam helps adapt them to the new model. Because Mastercam for SOLIDWORKS is a fully integrated SOLIDWORKS Certified Gold Product, it's fast, easy, and productive — the way programming should be.

## SAVE TIME

"Mastercam for SOLIDWORKS is making my job easier. I've been using Dynamic toolpaths to get better finishes. It works so well that I'm getting work done in half the time."

Nolan Farmer, Owner  
Farmer Plastics & Machining, Inc.

*For more information, see the pages about Mastercam Mill, Mastercam Router, and Mastercam Lathe.*